

A. NDS R4i Games-Engines Features and Introduction:

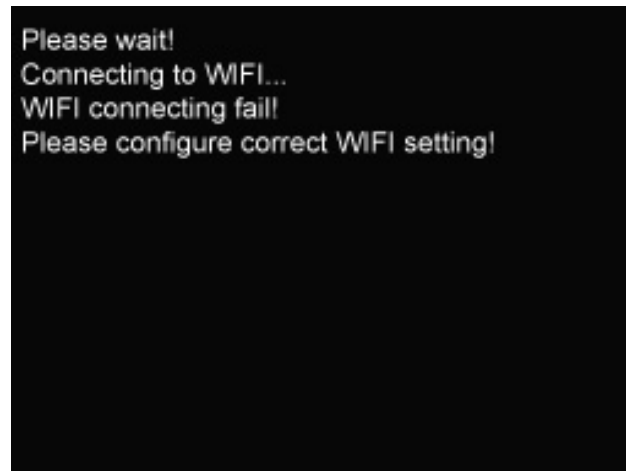
1. Go to the www.r4i-sdhc.com to download the latest firmware. Install the firmware to the micro SD card.
2. Insert micro SD card to the R4i-SDHC flash-cart, and switch on NDS machine. At the main menu, press the blue "GE" moving ball at left lower corner to start the R4i WIFI Games-Engines features



3. Message below indicate that, successfully login to the game-engines server through WIFI

```
Please wait!  
Connecting to WIFI...  
Connection success!  
Internal IP Adr:192.168.1.102  
Please wait!  
Connect to server success!  
Request login to server...  
Login to server success!
```

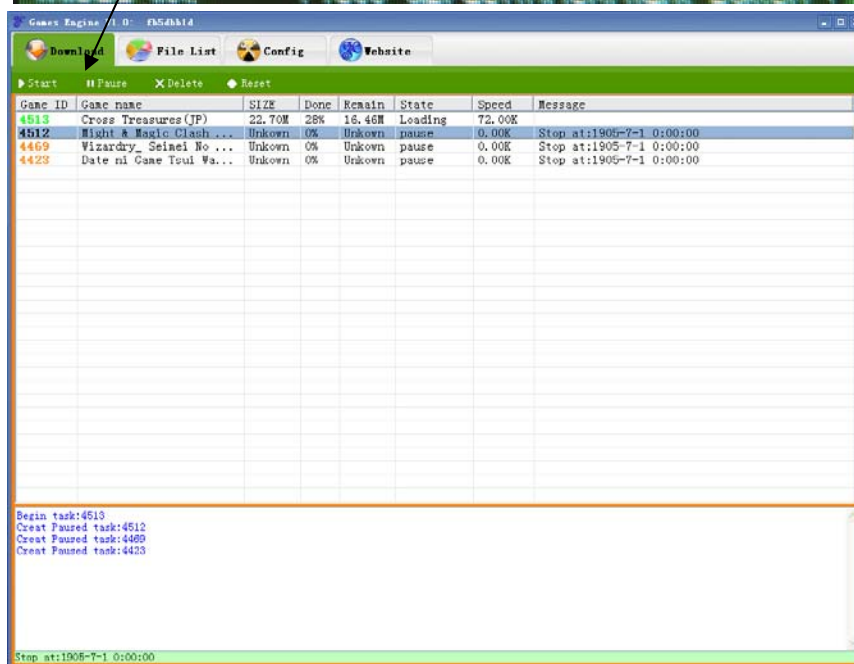
4. Please make sure you have already configure WIFI setting and WIFI network is available, other error message will be display as below.



5. There is a unique **user ID** of the flash-cart display at the top of the wed address after successful login into the R4i Games-Engines.



- Using the NDS R4i Games Engines features you can define the search method such as games type or games release date to search the prefer games using the NDS machine. From the search list you can read the info such as games introduction, games languages and etc... Just a simply select the games from the search list, you can add the games to the download list. And the games will be automatic download to your PC through the PC-based Games-Engines software.



B. PC Based Games Engine Installation Guide:

1. You need to install the PC based Games-Engines software. The installer can be downloading from the www.r4i-sdhc.com or www.games-engine.com. The installation file was “setup_games_engine_v1.0”



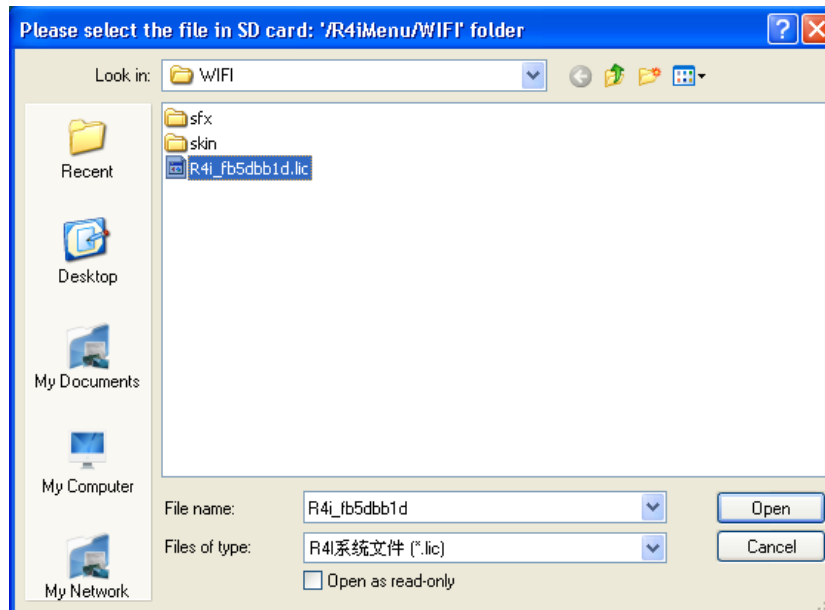
2. Install the “setup_games_engine_v1.0”



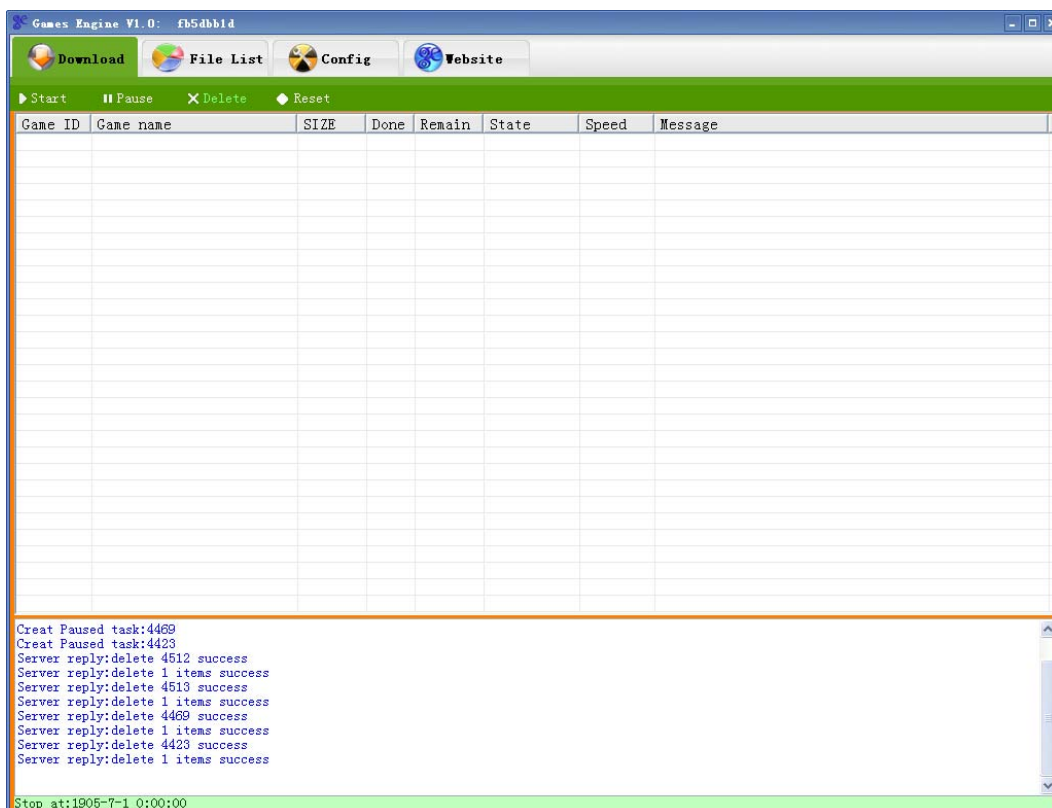
3. After install the Games-Engine, during the first execution of the games-engine software you will encounter a popup message which is requiring the license file.



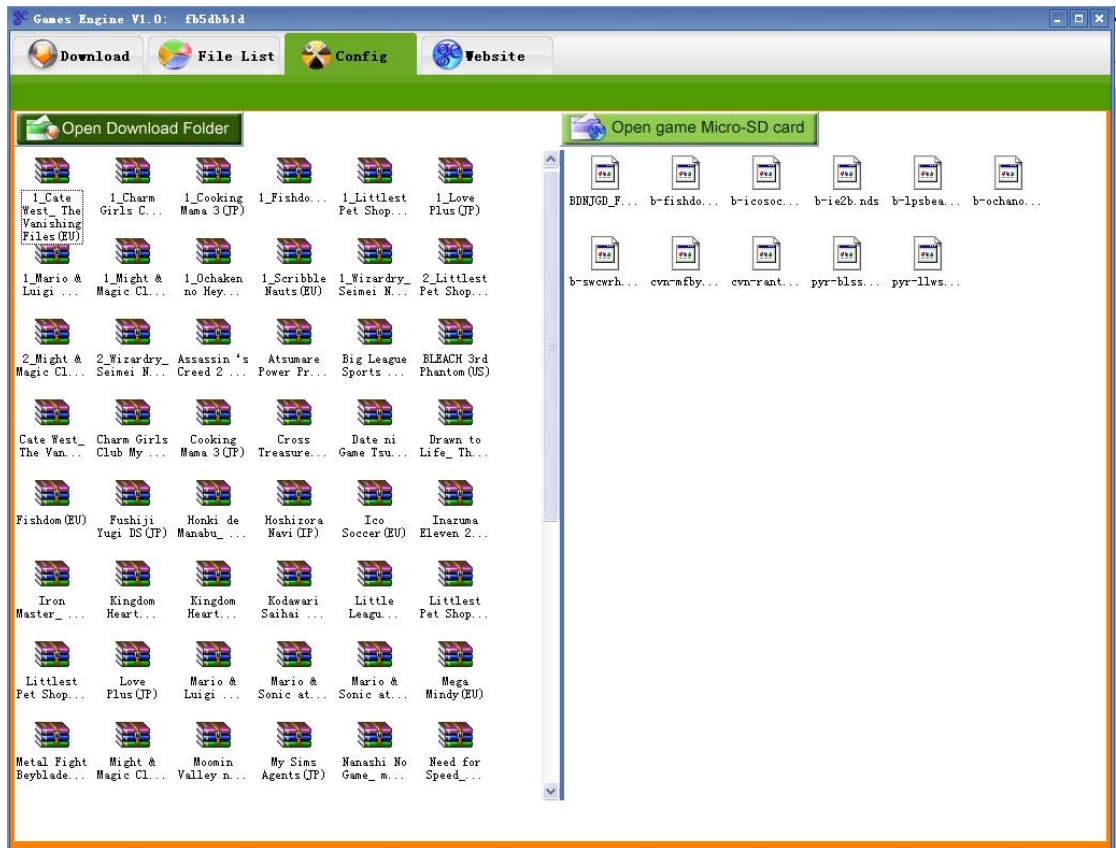
- The license file was locate under the micro-SD card “R4iMenu\WIFI” If you are using multiple flash-cart, make sure you select the correct license file which matching to the unique user ID display at the Games-Engine firmware at the NDS machine. This step only was required during the first time execution of the Games-Engine software.



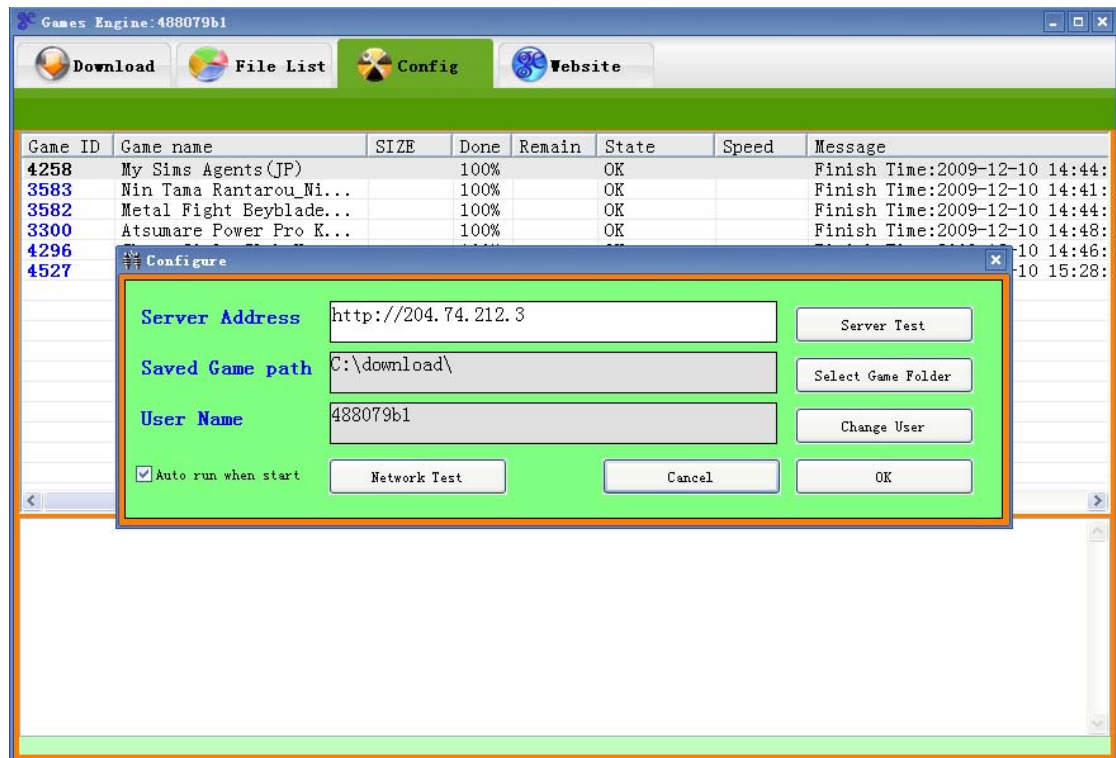
- Well now you can start to use the games-engines software. The “Download” tab refers to the download list of the NDS games. You can manage your downloaded NDS games here.



- All the complete downloaded NDS games can be view under the “File List” tab.



- Using the config menu to view the system configuration. You also can change the User ID by import different license file under config menu.



8. You also can visit our web site for latest information and extra features, under the “web tab”

The screenshot shows a web browser window titled "Games Engine: 488079b1". The browser's address bar and navigation buttons (Back, Forward, Stop, Refresh, Home) are visible. The website's header includes a navigation menu with "Download", "File List", "Config", and "Website" tabs. Below the navigation is a green bar with "Games Engine" and "R4i-SDHC" buttons. A welcome message reads "Today is 2009-12-10, Thursday, Welcome to our website!". The main content area features a large banner for "REFLEX MEXAN AVAILABLE 12.1.09" and a search bar. A secondary navigation menu includes "Home", "Games", "Movies", "MV", "Music", "Ebooks", "News", and "Forums". A large banner below reads "To be the best download station for NDS format". The main content is divided into several sections: a large featured game "ASSASSIN'S CREED III" with links for "WALKTHROUGH", "MAPS & SECRETS", and "Q & A"; a "Take-Two stock sinks on lowered ..." news item; a "New Releases" list with 10 items; and a "Popular Games" section with four game covers: "Advance Wars: Dual Strike (EU)", "SD Gundam G Generation DS(JP)", "Lunar Genesis(JP)", and "Advance Wars: Dual Strike(US)". A large "Juiced 2" game cover is also visible on the right side.